

For a better world:

REDUCE +

R

REUSE +

R

RECYCLE +

R

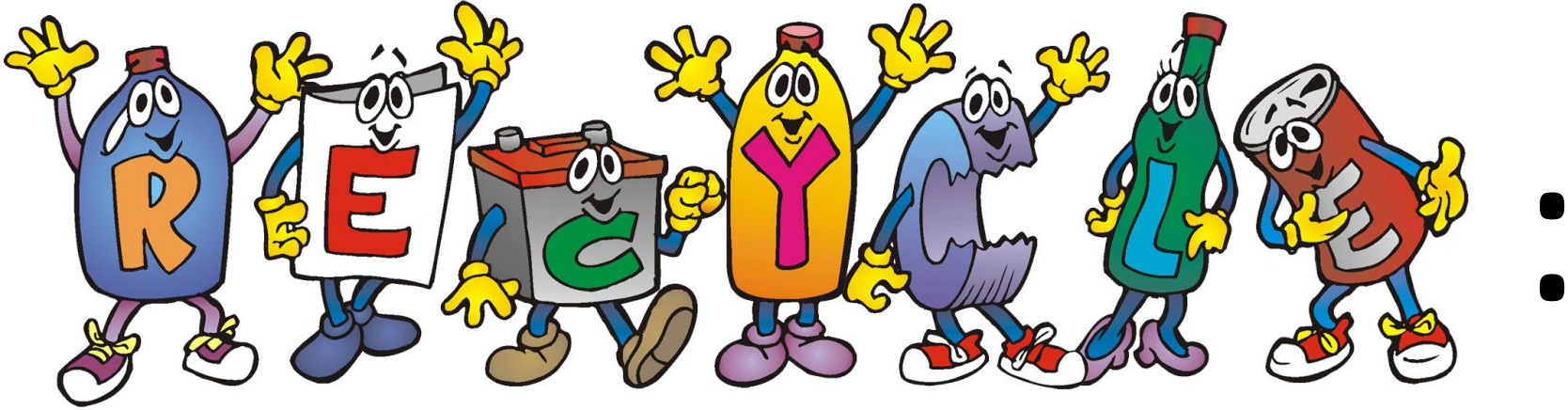


REDUCE:



REUSE:





All are important, but one of the most important "recycling", is one of the least made by people!



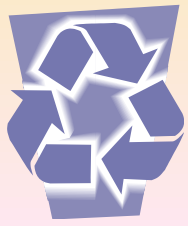


Beaches, that aren't more beaches!

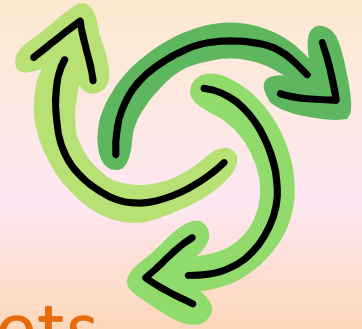
With pollution on the beaches, ends up killing other animals that lived there.

PANDORA DAY 2010

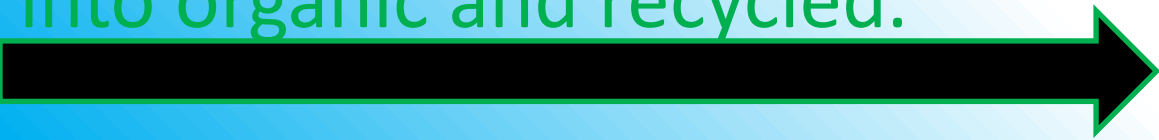




Recycle: I know that many do not contribute in this situation, throw garbage on the beaches, in the streets, everywhere we go, however minimal, will have some trash on the floor, trash, he should be in the trash! If people collaborate our world would be almost perfect! This is a subject discussed for a long time, but still there are people who do not cooperate.

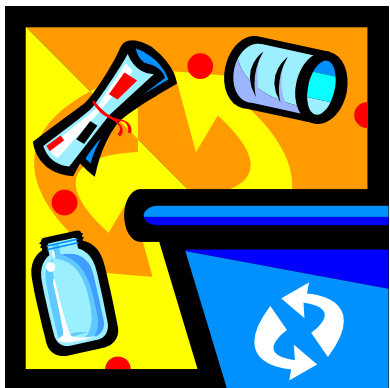


In my home, separate the waste into organic and recycled.



In my apartment, they make the same separation, recycled and organic.





Colégio Catarinense, for example it is clear that many, usually play, for example, banana peel in plastic, it should be organic! Of course, we sometimes get confused, make mistakes, but we must always be vigilant. As the geography teacher says: "The richest countries are those that have more pollution." Let's make that change, Brazil is the 5th richest country in the world and the 5th most polluted ... That has to change, we can show the world that we can be in one of the richest, but the less polluted!



PLASTIC:

The raw material of plastic is usually oil. Plastic has its name from the Greek "plastikos" meaning - can be molded. The plastic takes between two hundred and four hundred and fifty years to be decomposed.

In the supermarket, for example, some use plastic bags, it pollutes the environment. so it's good we use cloth bags that we can reuse.



METAL:



Time decomposition of metal:
four hundred and fifty years.
Metals found everywhere
around us. In our kitchen - pots,
cutlery. soda tin - in cars and on
our money, for example.





GLASS:



Decomposition time: more than ten thousand years.

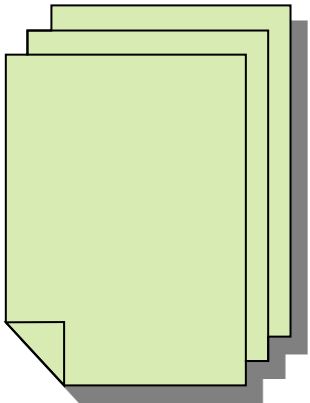
Glass is one of the most used products in the day-to-day tasks. To be discarded by people and businesses, can undergo a recycling process that ensures its reuse in production of recycled glass.



PAPER:



Decomposition time: Three months to several years. The paper is of Chinese origin. Mixing bark and rags tissue. Even today the cotton and linen rags are used by some countries in the manufacture of resistant paper, such as paper money.



I find absurd the streets of Florianópolis, has many
garbage waste, but even then people have a
disregard for littering.





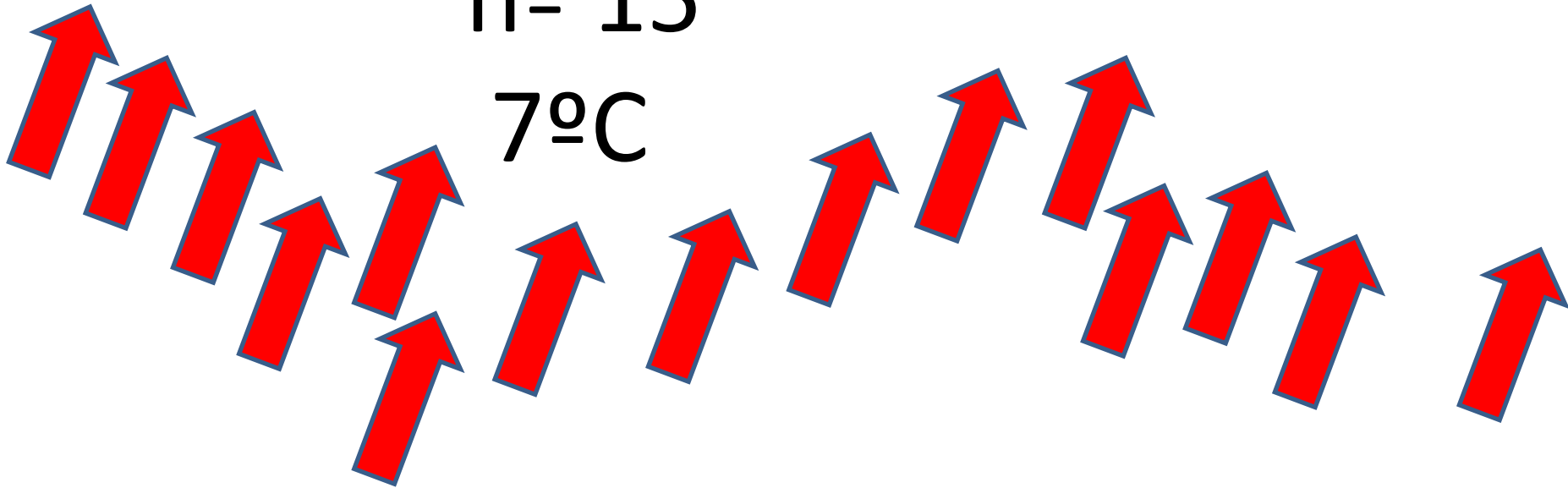
My dog also wants to save the world!



IsisTeixeiraBertoldi

nº 15

7ºC



R

R

R